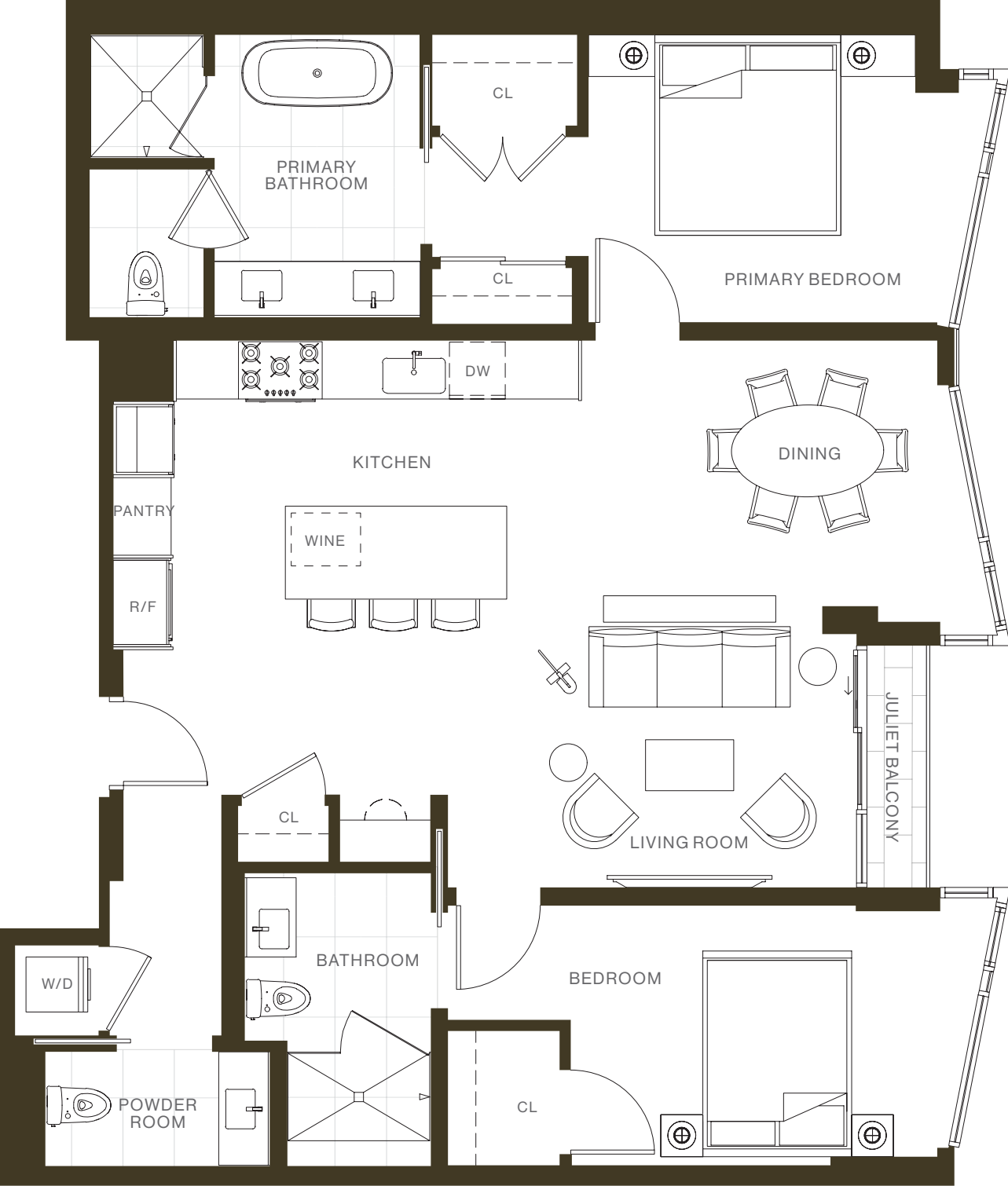
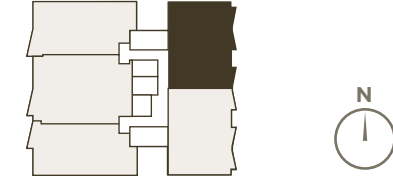


RESIDENCE 405

TWO BEDROOMS
 TWO BATHROOMS
 POWDER ROOM
 JULIET BALCONY

INTERIOR:
 1,353 SQUARE FEET



2525 VAN NESS, SAN FRANCISCO, CA 94109 | INFO@BELVEDERESF.COM | 415.321.7001

THIS IS NOT AN OFFER TO SELL, BUT IS INTENDED FOR INFORMATION ONLY. FLOOR PLANS SHOULD NOT BE RELIED UPON AS REPRESENTATIONS, EXPRESS OR IMPLIED. ALL DIMENSIONS SHOWN IN FLOOR PLANS ARE APPROXIMATE AND SUBJECT TO NORMAL CONSTRUCTION VARIANCES AND TOLERANCES. PLANS, DIMENSIONS AND OTHER FEATURES OF UNITS AND BALCONIES OF THE SAME TYPE AND FLOOR PLAN MAY VARY FROM FLOOR TO FLOOR. MEASUREMENTS OF ROOMS IN FLOOR PLANS ARE TAKEN AT THE GREATEST DIMENSION POINTS AND REPRESENT MAXIMUM OVERALL SUBJECT CUTOUTS. SELLER RESERVES THE RIGHT WITHOUT PRIOR NOTICE TO BUYERS TO MAKE CHANGES AND MODIFICATION TO THE DIMENSIONS, LAYOUT AND FEATURES OF ANY UNIT IN ACCORDANCE WITH THE APPLICABLE OFFERING PLAN FOR 2525 VAN NESS AVE. FURNITURE AND DECORATIVE FEATURES INDICATED IN FLOOR PLANS ARE FOR DISPLAY PURPOSES ONLY AND NOT INCLUDED WITH ANY UNIT. PROSPECTIVE BUYERS SHOULD NOT RELY ON THE SIZE REPRESENTATION FOR ANY UNIT OR UNIT BALCONY SHOWN IN FLOOR PLANS IN MAKING THE DECISION TO BUY A UNIT, AS SIZE, DIMENSIONS AND SQUARE FOOTAGE OF UNITS AND UNIT BALCONIES ARE APPROXIMATE ONLY. EXCLUSIVELY REPRESENTED BY VANGUARD PROPERTIES. VANGUARD PROPERTIES IS A REAL ESTATE BROKER LICENSED BY THE STATE OF CALIFORNIA (LICENSE #01486075) AND ABIDES BY EQUAL HOUSING OPPORTUNITY LAWS. PROSPECTIVE BUYERS SHOULD OBTAIN, READ AND REVIEW PRIOR TO SIGNING ANY AND ALL OF THE PROPERTY REPORTS REQUIRED BY FEDERAL AND STATE LAW, ALL SELLER DISCLOSURES REQUIRED BY STATE OR FEDERAL LAW, ALL OTHER SELLER DISCLOSURES. NO FEDERAL OR STATE AGENCY HAS JUDGED THE MERITS OR VALUE, IF ANY, OF THIS PROPERTY.

